



**URhulumente
weNtshona Koloni**

EzoLimo

**Incwadi ebhekiselele kwicandelo 14
yokuKhuthazwa koFikelelo kuMthetho
weNkcukacha, 2000**

ISEBE LEZOLIMO

OKUQULATHIWEYO

- 1. Inthshayelelo**
- 2. Ubume beSebe**
- 3. Imisebenzi yeSebe**
- 4. Iinkcukacha zoqhagamshelwano zesebola legosa lengcaciso**
- 5. Isikhokhelo esinikezelwa yiKhomishoni yamaLungelo aBantu yoMzantsi Afrika ngendlela yokusetyenziswa komthetho**
- 6. IiRekhodi**
 - 6.1 Inkcazelo yezihloko elithe iSebe lagcina iirekhodi zazo**
 - 6.2 IiRekhodi ezifumaneka ngokuzenzekelayo**
 - 6.3 Inkqubo yokwenziwa kwesicelo**
- 7. Iinkozo ezifumanekayo kuluntu lonke**
- 8. Amalungiselelo avumela ukubandakanywa kuqulunqo lomgaqo-nkqubo nemisebenzi yendlela yokwenziwa komsebenzi**
- 9. Uncedo olufumanekayo ngokubhekiselele kwizenzo okanye ukusilela ukwenza**
- 10. Ufikelelo nokufumaneka kwale ncwadi**

1. Intshayelelo

Eli xesha lalo mgaqo-siseko wangoku eMzantsi Afrika libonelela ngamalungelo ofikelelo kuzo naziphi na iinkcukacha ezigcinwe nguMbuso (kuxhomekeke kunyino oluthethelekayo) nakwiinkcukacha ezigcinwe licandelo labucala elidingeka ukuba lenze okanye likhusele naliphi na ilungelo.

INkundla yoMgaqo-siseko ayikutoliki ukuba nelungelo lofikelelo kwiinkcukacha njengelungelo lokufumana ufikelelo kwiinkcukacha zokwenza okanye zokukhusela ilungelo kuphela, koko nokuqinisekisa ukuba kukho ulawulo oluvulelekileyo noluthathela kulo uxanduva kuyo yonke imigangatho karhulumente.

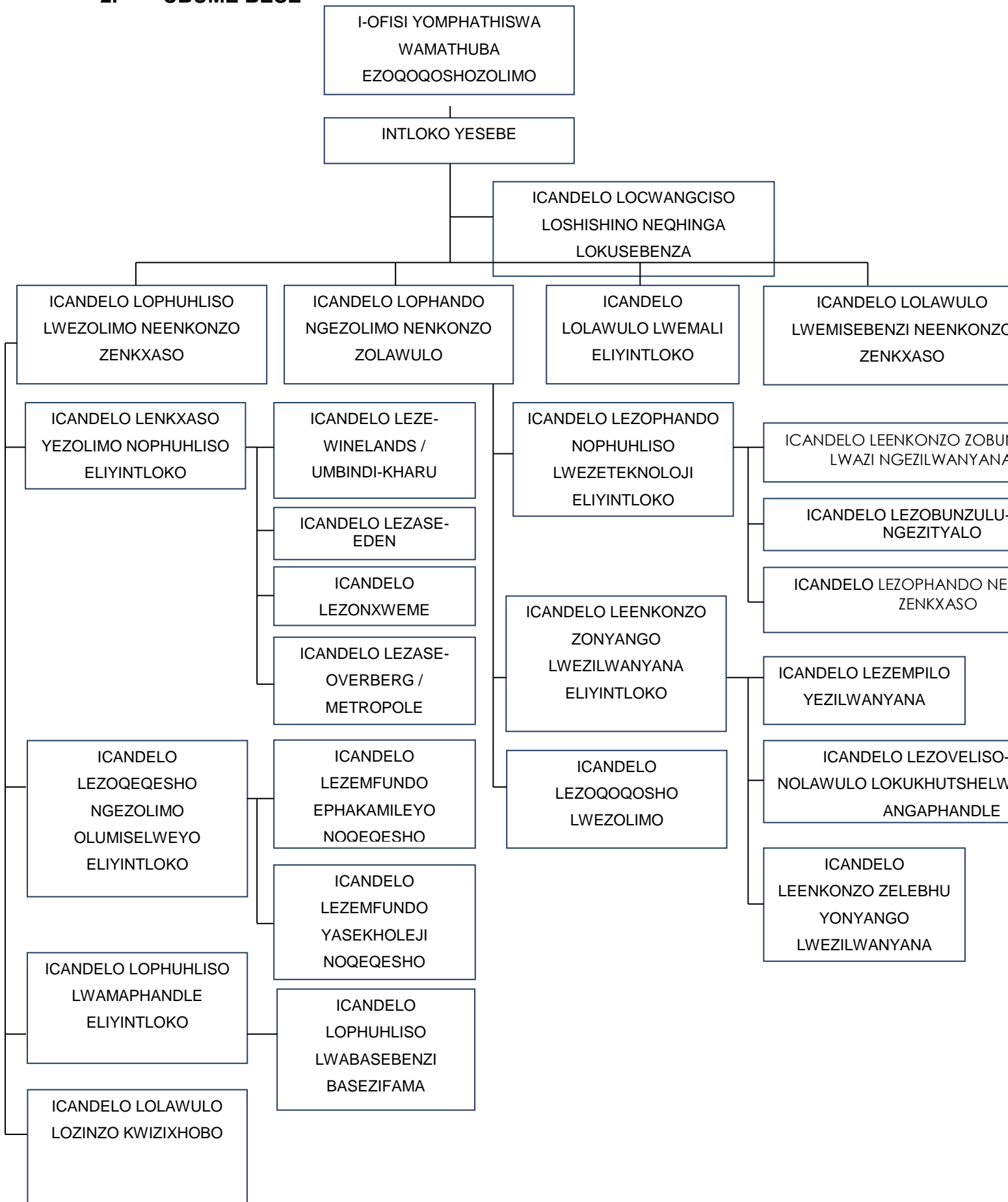
ICandelo 32(1)(a) nele-(2) loMgaqo-siseko woMzantsi Afrika, 1996 (uMgaqo-siseko) lifundeka ngolu hlobo:

- “(1) Wonke umntu unelungelo lofikelelo –*
- (a) Kuzo naziphi na iinkcukacha ezigcinwe nguMbuso; nazo Naziphi na iinkcukacha ezigcinwe ngomnye umntu ezifunekayo ekwenzeni okanye ekukhuseleni nawaphi na amalungelo.*
- (2) Imithetho kazwelonke imele imiselwe ukuze isebenze kula malungelo, kwaye isengabonelela nangemilinganiselo yengqiqo yokuphelisa umthwalo kwezolawulo nakwezemali embusweni”.*

Oku sele kuchaziwe ngaphambili kummiselo woMthetho woKhuthazo loFikelelo kwiiNkcukacha, 2000 (PAIA). Injongo yePAIA kukumilisela inkcubeko yokungabi namfihlelo nokuba noxanduva kumacandelo karhulumente nalawo abucala ngokunjalo nokuxhobisa nokufundisa abantu boMzantsi Afrika ukuze bawaqonde amalungelo abo.

Ngokwecandelo 14 lePAIA icandelo likarhulumente limele libenayo incwadi echaza phandle imisebenzi, phakathi kwezinye izinto kwaye zibe iirekhodi zesalathiso sencwadi leyo zigcinwe ngurhulumente. Le ncwadi ikwenza kusebenze okunikezelwa licandelo 14 lePAIA kwaye ibonelela ngoncedo kwinkqubo emayilandelwe ekuceleni ukufikelela kwirekhodi egcinwe Ezolimo

2. UBUME BESE



3. IMISEBENZI YESEBE

3.1 INTloko yeSebe

Ukukhuthazwa koLimo eNtshona Koloni ngokubonelelwa ngazo zonke iinkonzo njengoko zichazwe apha ngasezantsi.

3.2 ULawulo

Ukunikezelwa kobunkokhelo, isikhokhelo, ulawulo nenkxaso yemali ukulungiselela ukuncedwa kwiinkqubo ezijongene nalo ukuzalisekisa isigunyaziso salo ngokunikezelwa kwenkonzo kwiPhondo.

ICandelo eliyiNtloko: ULawulo lweMali

Ukunikezela ngenkonzo esebenzayo nefanelekileyo yolawulo lwemali ngokwemiqathango yeenkonzo zokunikwa kwengxelo, iinkonzo zolawulo lwemali, ulawulo lwempahla, iinkonzo zothutho, imisebenzi yesixokelelwano sonikezelo, nolawulo lwangaphakathi..

ICandelo: Ukucwangciswa kweShishini neQhinga

Ukunikezelwa ngecebo lobugcisa koqoqosho nemiba enxulumene nalo ukulungiselela ukuthatyathwa kwezigqibo okukwiqondo eliphezulu

ICandelo: IiNkonzo zeznkxaso yokuSebenza

Ukunikezelwa kweenkonzo zenkxaso zomiliselelo ngokwemiqathango yolawulo lwesibonelelo nololongo, impilo yasengqeshweni, ukhuselo nokhuseleko, ukulawulwa kolwazi nokuqinisekiswa ngento yokuba yonke imisebenzi enikezelwa kwiZiko leNkonzo Emanyeneyo ilungelelanisiwe kwiyunithi yobudlelwane obumanyanisiweyo.

ISEBE: UKUPHUHLISWA KOLIMO NEENKONZO ZENKXASO

Ukuqinisekiswa kophuhliso lolimo neenkonzo zenkxaso ngokubonelelwa nokulawulwa kwenkxaso yomfama nophuhliso, ukuphuhliswa kwabasebenzi kwiCandelo loLimo, ukuphuhliswa kwamaphandle nokugcinwa kwezibonelelo zendalo.

ICandelo eliyiNtloko: Ukuxhaswa koMfama neNkonzo zoPhuhliso

Ukuqinisekiswa kwendlela yokugcinwa kwenkxaso ukulungiselela amafama amatsha nasele ezinzile, ukulinganiswa kwempembelele yamangenelelo njengoko

enikezelwa yile Nkqubo, utyalo-mali oluxhathisileyo oluvela kwicandelo langasese nokubekwa ngamaqela kwempahla, kuqinisekiswa ngobulunga nemigangatho yenkonzo nengcebiso kumafama, ukuncedwa koomasipala namanye amasebe karhulumente ngomiliselwe lwezitya zokutya ezilungiselelwe uluntu namakhaya yaye ezi nkonzo zinikezelwa::

ICandelo loLawulo: IaseWinelands/ Central Karoo

ICandelolo Lawulo: IaseEden

ICandelo loLawulo: IaseOverberg/Metropole

ICandelo loLawulo: Iase West Coast

ICandelo eliyiNtloko: ICandelo leMfundo noQeqesho loLimo

Ukuququzelelwa nokunikezelwa kwemfundo noqeqesho okuhambelana neQhinga leMfundo noQeqesho loLimo (AET) kubo bonke abathathi-nxaxheba kwicandelo lezolimo kwiNtshona Koloni ukulungiselela ukusekwa kwecandelo elinolwazi, elinempumelelo nokumiliselwa kweQhinga loPhuhliso IwaBasebenzi beSebe ukulungiselela icandelo kwiPhondo yaye ezi nkonzo zinikezelwa:

ICandelo: IZiko leMfundo ePhakamileyo

Ukunikezelwa kweenkqubo zemfundo ephakamileyo noqeqesho.

ICandelo: Centre for Further Education

Ukunikezelwa kweenkqubo zemfundo ephakamileyo noqeqesho.

ICandelo eliyiNtloko: UkuPhuhliswa kwaMaphandle

INjongo yeNkqubo kukuyila iingingqi zoluntu zasemaphandleni ezizele ludlamko nokugcinwa nokuququzelelwa komiliselwe kweNkqubo yoPhuhliso eBanzi yaseMaphandleni kwiNtshona Koloni.

ICandelo: UkuPhuhliswa koMsebenzi waseFama

Ukukhuthazwa kophuhliso lomsebenzi wasefama

ICandelo: UkuLawulwa kokuGcinwa kweZibonelelo

Injongo yale Nkqubo kukunikezela ngezisombululo zolawulo zokugcinwa kwezibonelelo neemethodi nokunonelela ngeenkonzo zobunjinieli bolimo nololongo lomhlaba, nonxibelelwano olukhawulezileyo, ukuququzelelwa nokumiliselwa kweeprojekti ngokunjalo nokukhutshelwa kwetheknoloji kubathengi bethu namaqabane.

ISEBE: UPHANDO LOLIMO NEENKONZO ZOLAWULO

Ensuring delivery of agricultural research and regulatory services through the provision of veterinary services, and comprehensive research, development, and technology services.

ICandelo eliyiNtloko: Veterinary Services

Ukuqinisekiswa ngezilwanyana ezisempilweni, ukuseleko lwenyama neeveliso zenyama ukulungiselela abathengi nokuququzelelwa ukuthengiswa kwezilwanyana ngokufunyanwa kwesiqinisekiso ezisenyaniweni zokuthunyelwa kwamanye amazwe kwezilwanyana neemveliso zezilwanyana kwiNtshona Koloni ngokumiliselwa koMthetho weAnimal Diseases Act, 35 of 1984 and the Meat Safety Act, 40 wama-2000. Inkxaso iyanikezelwa ngokunjalo kumafama asakhulayo ukwandisa ukuveliswa kwzilwanyana ezingundoqo ngokulungiswa kwempilo yezilwanyana..

ICandelo: IMpilo yeZilwanyana

Ukulawulwa kokubonwa kwezifo zezilwanyana, uthintelo nolawulo.

ICandelo: Ukhusele loKutya noLawulo lokuThunyelwa kokutya kwamanye amazwe

Ukulawulwa kokhusele lokutya nemiba yolawulo lokuthunyelwa kokutya kwamanye amazwe.

ICandelo: LeeNkonzo zeLebhu yeMfuyo

Ukunikezelwa kweenkonzo zelebhu yemfuyo kwiPhondo.

ICandelo eliyiNtloko: IiNkonzo zoPhando noPhuhliso leTheknoloji

Injongo kukunikezela ngophando lwezolimo neenkonzo zophuhliso kwimveliso yezilwanyana, kwimveliso yezityalo nokusetyenziswa kwezibonelelo nokusasazwa kophando nengcaciso yobuchule kubo bonke abachaphazelekayo kwicandelo lolimo.

ICandelo: INzululwazi yeZilwanyana

Ukunikezelwa kweenkonzo zophando zenzululwazi yezilwanyana

ICandelo: INzululwazi yeZityalo

Ukunikezelwa kweenkonzo zophando zenzululwazi yezityalo

ICandelo: Research Support Services

Ukunikezelwa kwenkxaso ebanzu yophando neenkonzo zengcaciso.

ICandelo: UQoqsho lwezoLimo

Injongo yale Nkqubo kukunikezela kwangethuba kwenkxaso efanelekileyo yoqoqsho yolimo kubathengi bangaphakathi nabangaphandle ukulungiselela

ukuqinisekiswa ngokugcinwa kophuhliso lwezolimo nophuhliso lwamaphandle. Abathengi beSebe balindele ukuba le Nkqubo ibabonelele ngengcebiso nenkxaso eqalela kwinqanaba lefama ukuya kwinqanaba lecandeloelisekwe kwimithetho-siseko elungileyo yenzululwazi nophando..

NB: Zonke iinkonzo zinakho ukufumaneka ngokuqhagamshelana neSebe:

INombolo yemfonomfono: 021-8085111 or,

IFAKSI: 021- 8085120 or,

IWebhusayiti: <http://www.elsenburg.com>

4. IINKCUKACHA ZOQHAGAMSHELWANO ZEGOSA LEENGCOMBOLO

ICANDELO 14 (1)(b)

Igosa leNgcaciso: Adv B Gerber

Legislature Building / P O Box X659

15 Wale Street

Cape Town, 8000

Tel: 021 467 6032

Fax: 021 467 3300

E-mail: Brent.Gerber@westerncape.gov.za

IINKCUKACHA ZOQHAGAMSHELWANO ZESEKELA LEGOSA LENGCACISO

ICANDELO 14(1)(b)

Nksk Joyene Isaacs

Head: Western Cape Department of Agriculture

Western Cape Government

Private Bag X 1/ Muldersvlei Road

ELSENBURG

7607

Tel: 021 808 5004

Fax: 021 808 5000483 6412

E-mail: joyenei@elsenburg.com

5. ISIKHOKHELO ESIVELA KWIKHOMISHONI YAMALUNGELO ABANTU YOMZANTSI AFRIKA (SAHRC) NGENDLELA YOKUSETYENZISWA KOMTHETHO ICANDELO 14(1)

Luxanduva lweSAHRC ukuqulunga isikhokhelo ngokuhambelana necandelo le-10 lePAIA, ngendlela ebanzi nangemo, njengoko kunokudingwa ngumntu ongathanda ukusebenzisa naliphi na ilungelo eliquathe eMthethweni.

Esi sikhokhelo siyafumaneka ngokunjalo kuzo zonke iilwimi ezisesikweni kwiSAHRC yaye nayiphi na imibuzo ngalo mba kufuneka ijoliswe kwi:

IKhomishoni yaMalungelo aBantu yoMzantsi Afrika	
IMfonomfono	+27 11 877 3900
IFaksi	+27 11 403 0684
Idilesi yel-Meyile	PAIA@sahrc.org.za
Idilesi yeposi	PAIA Unit: Promotion of Access to Information Private Bag 2700 Houghton 2041
Idilesi yesitalato	South African Human Rights Commission 33 Hoofd Street Braamfontein 2017 JOHANNESBURG
Webhusayiti	www.sahrc.org.za

6. IIREKHODI ICANDELO 14(1)(d)

6.1 INKCAZELO YEZIHLOKO ELITHI ISEBE LIGCINE IIREKHODI PHANTSI KWAZO

Inkcazelo yesihloko	ICandelo leerekhodi ezigciniweyo
INKqubo ULawulo 1:	<ul style="list-style-type: none"> • Izicwangciso zeFayile • Irejista yezinto ezingenayo neziphumayo • Irejista yeefayile

	<ul style="list-style-type: none"> • Izivumelwano zenqaba lenkonzo • Iingxelo zophicotho-zincwadi • Ivawutsha zentlawulo • Iifayile zemivuzo • Irejista yempahla • Amabango eS & T • IiOdolo • Iirisithi • Ii-Invoyisi • Iingxelo zemali neengxelo • BAS (Basic Accounting Systems) • Iikowuti • Imizuzu yeentlanganiso yekomiti yethenda • Izivumelwano zethenda • Ukulolongwa kweefayile: izibonelelo zeIT • Uluhlu lwabanikezeli benkonzo • Iingxelo zovavanyo lwethenda • Ukwenziwa kwesicelo: i-E-meyile <p>Iirikhodi ezilandelayo zeSebe zifumaneka kwiZiko leNkonzo eManyeneyo kwiSebe leNkulumbuso</p> <ul style="list-style-type: none"> • Iinkqubo ze-eletroni – Persal • Uluhlu lwabasebenzi • Iingxelo zokuvavanywa kokusebenza • Iifayile zebhasari • Iirikhodi zokufunwa nokukhethwa kwabasebenzi • Imiba yobudlelwane engqeshweni
<p>INKqubo 2: Sustainable Resource Management</p>	<ul style="list-style-type: none"> • Iifayile zeprojekti zeNkonzo zoBunjini ezinikezelwayo (kuzo zozi-6 izithili) • Iifayile zeprojekti zeeprojekti zoLolongo loMhlaba (kuzo zozi-6 izithili) • Ubungqina (APP) • Ukufunda usengqeshweni • UNcedo lwentlekele olunikezelweyo • Izicelo zolwahlulo kunye/okanye ukucandwa ngokutsha komhlaba wolimo • Ukuthengwa kweBID • Imizuzu yeKomiti yoLungelelwaniso kuManzi ezoLimo • Amacandelo ombutho • Uluhlu lwabasebenzi • Izivumelwano zokusebenza • Iingxelo zovavanyo lomsebenzi • Irejista yeefayile • Irejista yempahla • Amabango eS & T • Iikowuti • Imizuzu yeKomiti yoNxibelelwano lwaManzi yePhondo • IKomiti yeQhinga lokuNikezelwa kwaManzi kwiWC • Iiprojekti zokufunda ezahlukeneyo zamanzi

<p>INkqubo 3: UkuXhaswa koMfama nokuPhuhliswa</p>	<ul style="list-style-type: none"> • IiFayile yeNkqubo yeProjekti (kuzo zozi-6 izithili) • Ubungqina (APP) • IiNtlanganiso zoLwabiwo lweProjekti yeSebe (DPAC) • IiFayile zeMpahla IiNtlanganiso zeKomiti yoLwabiwo lweMpahla yeProjekti (CPAC) • Smart Pen / Xcallibre File • Manstrat • INkqubo yeNkxaso eBanzi yezoLimo (CASP) • Ukwandiswa kweNkqubo yoVuselelo ngokutsha (ERP) • Ilima Letsema • IKhomishoni yeNkonzo kaRhulumente • Ukwenziwa kwamalinge • Ukuncedwa ngonamava • IQela loMsebenzi lamaSebe ngoKhuseleko loKutya • IKomiti yePhondo yoQuquzelelo lokuBuyiselwa koMhlaba • IKomiti yeMinikelo yePhondo (DRDLR) • Casidra
<p>INkqubo 4: IiNkonzo zeMfuyo</p>	<ul style="list-style-type: none"> • Ingcaciso yomthengi • Iingxelo zelebhu • Iziphumo zophando • IiNngxelo zeEpidemiology • UkuFayilisha (Ukugcinwa kweerekhodi kubandakanywa iifayile zabasebenzi) • Uluhlu lwezilarha zokuxhela ezibhalisiweyo • Uluhlu lwabahloli abagunyazisiweyo benyama • Uluhlu lwezityalo zeSterilisation • Uluhlu lwezilarha zokuxhela ezamkelweyo zilungiselelwe uthengiso lwezikhumba neemfele kumazwe angaphandle • Uluhlu lweevenkile ezikwinqanaba eliphakathi lezikhumba neemfele zokuthunyelwa kwamanye amazwe • INgxelo yoNyaka yeMpilo yeZilwanyana • Iingxelo ngokuqhambuka kwezifo zezilwanyana • Iingxelo yokubalwa kwezilwanyana • IziCwangciso zokunokwenzeka kwizifo zezilwanyana noMgangathoneenkqubo <ul style="list-style-type: none"> • Iingxelo ngezifo zezilwanyana eziboniweyo • Iingxelo ngothintlo lwezifo zezilwanyana nokugonywa • Iinkcukacha zerekhodi yokuthunyelwa nokuthengwa kwamanye amazwe
<p>INkqubo 5: IiNkoko zeThekhnoloji, uPhando</p>	<ul style="list-style-type: none"> • Iiprojekti zophando • Ubungqina (APP) • Ukufayilisha ngokubanzi (Ukugcinwa kwerekhodi iifayile zabasebenzi, ezeselula, njl.njl)

noPhuhliso	<ul style="list-style-type: none"> • Imizuzu yeentlanganiso zabasebenzi • lirekhodi ngomhlaba, amanzi, izityalo nezilwanyana nokuhlalelwa kokutya kwezilwanyana <ul style="list-style-type: none"> • lintlanganiso zekomiti yophando lweSebe • Izicelo zomsebenzi zololongo lwefama <p>Ukulolongwa koluhlu lokumiliselwa kweprojekti liSebe leMisebenzi kaRhulumente noThutho</p> <ul style="list-style-type: none"> • lingxelo, iiNkcukacha zamanani
INkqubo 6: Agricultural Economics	<ul style="list-style-type: none"> • limvavanyo zokubuyiselwa ngokutsha komhlaba • limvavanyo zamaFama asaKhasayo • limvavanyo zamaFama aNtsundu • Ukuthengwa kweenkcukacha zolwazi ezihlawulelwayo rhoqo ngenyanga • Quantec data • Technofresh data
INkqubo 7: UQeqesho lwezoLimo oluLungiselelweyo	<ul style="list-style-type: none"> • lirekhodi zabamkelweyo/ abathweswe izidanga • lifayile zentlawulo yeLogis • lifayile zekhefu • IFayile zeBhasari • Amaphepha eeMviwo • Amaphepha eempedulo zoViwo • lifayile zobudlelwane engqeshweni • lirekhodi zabasebenzi • lifayile zeHostele • Inkcukacha zamanani abafundi • lifayile zabafundi • lifayile ngemiba enxulumene nabafundi. • Izivumelwani zeThenda • Iziphumo zeeMviwo • Ingcaciso ngokutyisa • lingxelo zemali • Ifayile ye-Invoyisi namabango • lifayile zoLawulo lwamaZiko • Amabango eS & T • Irejista yempahla • Imoto zikarhulumente • Imizuzu yeentlanganiso zabasebenzi • Imizuzu yeentlanganiso zoSihlalo bamaSebe • lintlanganiso zamanqako • IProspectus • Inkqubo yokuziVavanya • Ukuvavanywa kweSifundo • Ifayile zezifundo zethuba elifutshane • Ifayile yekowuti • Imidlalo nolonwabo lwabafundi • Ifayile yokwenzakala engqeshweni • Ukuthengiswa • (Imbizo's, Exhibitions, Career Exhibitions)
INkqubo 8: Rural	<ul style="list-style-type: none"> • liFayile zeNkqubo yeProjekti (onke amawodi eCRDP asebenzayo)

Development	<ul style="list-style-type: none"> • Ubungqina (APP) • liNtlanganiso zoLwabiwo lweProjekti yeSebe (DPAC) • lintlanganiso zeKomiti yoQuquzelelo lwamaSebe • PSO 11: lintlanganiso zeqela lokuSebenza lesi-4 • Casidra • Ingcaciso ngomthengi • Ifayile kkawonke wonke (Ukugcinwa kwerekhodi kubandakanywa iifayile zabantu, ezeselula njl.njl.) • Izicwangciso zoshishino • Isivumelwano senqanaba lenkonzo • lingxelo • lintlawulo • Irejista yempahla S & T Claims • Ifayile ye-invoyisi namabango • Ukukhutshelwa kweentlawulo • Ukhuphiswano lomsebenzi wasefama wonyaka • Indibano yengxoxo yabasebenzi basefama (kwiSizwe nakwiPhondo) • Irejista yokuthunyelwa komsebenzi wasefama Ifayile kkawonke wonke (Ukugcinwa kwerekhodi kubandakanywa iifayile zabantu, ezeselula njl.njl.) • Imizuzu yeentlanganiso zabasebenzi • Ifayile zeprojekti yeNkqubo (kuzo zozi-6 izithili) • Ubungqina (APP) • liNtlanganiso zoLwabiwo lweProjekti yeSebe (DPAC) • Ifayile zeentlawulo zeLogis • Ifayile zekhefu • Ifayile zobudlelwane engqeshweni • Irekhodi zabasebenzi • Ingcaciso yokutyisa • lingxelo zemali • lingxelo zarhoqo ngenyanga • iingxelo zarhoqo ngenyanga • Ingxelo zarhoqo ngekota • Ifayile ye-invoyisi namabango • Ifayile zoLawulo lweZibonelelo • Amabango eS&T • Irejista yempahla • Izithuthi zikarhulumente

6.2 IIREKHODI EZIFUMANEKA NGOKUZENZEKELAYO

INKCAZELO YAMACANDELO EEREKHODI EZIFUMANEKA NGOKUZENZEKELA NGOKUHAMBELANA NECANDELO 15(1) LOMTHETHO WOKUKHUTHAZWA	INDLELA YOKUFUMANA IIREKHODI
------------------------------------------------------------------------------------------------------------------------------------------------------	-------------------------------------

KWELUNGELO LOKUFUNYANWA KWENGCACISO	
INKCAZELO YAMACANDELO EEREKHODI EZIFUMANEKA NGOKUZENZEKELA UKULUNGISELELA UKUKOTSHWA NOKUTHENGWA NGOKUHAMBELANA NECANDELO 15 (1) (a) (ii)	
(a) liNgxelo zoNyaka (b) IsiCwangciso seQhinga (c) liNgxelo zarhoqo ngekota zokwenziwa komsebenzi (d) Imigangatho yeNkonzo (e) Ingxelo yoMmi (f) INtetho yoMphathiswa (g) liNgxelo zeMali (h) liNgxelo zoHlahlo Lwabiwo-mali neeNtetho (i) IManyuwali neMiyalelo (j) liNtlanganiso zoLawulo	likopi zezi rekhodi zinokufunyanwa ngentlawulo yomrhumo ochaziweyo kwiSebe lezoLimo, Private Bag X1, Muldersvlei Road, Elsenburg.

INKCAZELO YAMACANDELO EEREKHODI EZIFUMANEKA NGOKUZENZEKELA UKULUNGISELELA UKUKOTSHWA NOKUTHENGWA NGOKUHAMBELANA NECANDELO 15(1)(a)(iii)	
(a) lincwadana ngezihloko ezinxulumene nezolimo (b) UPapasho, liphamflethi, Amaphetshana eendaba, iiposta (b) Yonke ingcaciso ikwi- webhusayiti	likopi zezi rekhodi zinokufunyanwa ngentlawulo yomrhumo ochaziweyo kwiSebe lezoLimo , Private Bag X1, Muldersvlei Road, Elsenburg Le ngcaciso ilandlayo iyafumaneka kwiwebhusayiti (www.elsenburg.com): <ul style="list-style-type: none"> - Malunga neSebe - Imisitho - Amajelo eendaba - iRadiyo Elsenburg - Ikhalenda yemisitho - liNkonzo - UPuhliso lophando - AmaZiko oPhuhliso lwezoLimo - Amaxwebhu engcaciso

6.3 INKQUBO YOKWENZIWA KWESICELO

- Umenzi wesicelo kufuneka asebenzise iFomu A njengoko kuchaziwe kwimithetho epapashwe ngokwemiqathango yoMthetho wokoKhuthazwa kweLungelo lokuFunyanwa kweNgcaciso (iSaziso sikaRhulumente R223 somhla wesi-9 kuMatshi 2001). Ifomu A iqhotyoshelwe apha.
- Umrhumo wesicelo okwisambuku sama-R35,00 uhlawulwa ngaphambi kokuba isicelo siqwalaselwe.
- Ukuhlawulwa komrhumo wesicelo akwenzeki kwirekhodi ecelwe ligosa lolongo okanye umphandi wololongo ngenjongo zokuphanda ulolongo okanye uncino ngokwemiqathango yezibonelelo zoMthetho woLolongo, we-1998 okanye imimiselo eyenziwe phantsi kwecandelo lama-44 alo Mthetho uxeliweyo (ngokweSaziso sikaRhulumente R991 womhla we-14 Oktobha2005).
- Intlawulo yesicelo somrhumo ayihlawuleki ukuba isicelo sofikelelo kwiirekhodi sinxulumene nokufikelela kwiinkcukacha zobuqu (ngokweSaziso sikaRhulumente R991 somhla we-14 Okthobha 2005)
- “Isicelo somrhumo” sithetha intlawulo yama-R35-00 njengoko ichaziwe kummiselo, oqhotyoshelweyo apha.
- Isibonelelo senziwa kwiFomu A ukulungiselela ukuba umenzi wesicelo abonise ukuba ingaba ufuna ikopi yerekhodi okanye ufuna nje ukuyifunda nje.
- IForm A ifuna ngokunjalo ukuba umenzi wesicelo achaze into yokokuba uyifuna ngaluphi na ulwimi irekhodi, nangona isebe linganyanzelekanga ukuba liyiguqulele kulo.
- Umenzi wesicelo unakho ngokunjalo ukuchaza ukuba uyifuna ukuyifumana ngaluphi na uhlobo le rekhodi (umz. ikopi yephepha, ikopioyifumana ngekhompyutha, njl.njl) Oku kuya kulandelwa ngaphandle kokokuba oku kunxamnye nokusebenza kweSebe okanye ngezizathi ezibambekayo ayinakho ukunikezelwa ngolu hlobo lucelwayo.
- Umrhumo wokufumana le rekhodi uyahlawulwa ukuba ngaba umenzi wesicelo mhlawumbi udinga iikopi zale rekhodi iceliweyo
- IGosa leeNkcukacha okanye igosa eliliSekela leeNkcukacha, ngokwemeko, limele ngokukhawuleza kangangoko kunokwenzeka, kodwa nakwesiphi na isiganeko kwiintsuku ezingama-30, emva kokufumaneka kwesicelo, lithathe

isigqibo ngokuhambelana noMthetho sokuba linikezele ngofikelelo okanye limazise ngesiphumo lowo wenza isicelo.

- IGosa leeNkcukacha okanye igosa eliliSekela leeNkcukacha, ekwenziwe kulo isicelo, lingalandisa ixesha leentsuku ezingama-30 ukuze likwazi ukumelana nesicelo, ukwenzela ixesha elandisiweyo njengoko kuchaziwe ngokwecandelo lama-26 lePAIA.
- Ukuba sinxulumene neerhekhodi zomntu wesithathu njengoko kuchaziwe ngokwecandelo 34 (1), 35 (1), 36 (1), 37 (1) or 43 (1) of PAIA, iGosa leeNkcukacha okanye igosa eliliSekela leeNkcukacha, ngokwemeko, limele lithathe onke amanyathelo engqiqo, kodwa nakwesiphi na isiganeko, kwiintsuku ezingama-21 emva kokufumaneka kwesicelo, ukuze lazise umntu wesithathu lowo zinxulumene naye iirekhodi.
- Umntu lowo wesithathu wazisiweyo, angenza imbalelwano okanye athethe neGosa leeNkcukacha okanye igosa eliliSekela leeNkcukacha kwiintsuku ezingama-21, ngokwemeko, achaze ukuba kutheni simele saliwe isicelo okanye anganikezela ngemvume ebhaliweyo yokuba zaziswe iirekhodi zakhe.
- IGosa leeNkcukacha okanye igosa eliliSekela leeNkcukacha, ngokwemeko, limele ngokukhawuleza kangangoko kunokwenzeka, kodwa kwisiganeko kwiintsuku ezingama-30 emva kokwaziswa komntu wesithathu ngamnye, lithathe isigqibo sokuba liyanikezela okanye liyasala isicelo zofikelelo kwaye limele limazise umntu wesithathu ngokwecandelo 49 lePAIA, malunga nesigqibo salo.
- Umntu wesithathu uza kuba nelungelo lokufaka isibheno ngaphakathi esichasene nesigqibo kwiintsuku ezingama-30 emva kokunikwa isaziso. Singafakwa isibheno ngokugcwalisa iFomu B, eqhotyoshelweyo apha, kwaye nangokudlulisela kwaoku kwifisi yeGosa leeNkcukacha okanye igosa eliliSekela leeNkcukacha.
- Umenzi-sicelo unelungelo lokufaka isibheno sangaphakathi, kwiintsuku ezingama-60 emva kokukwa isaziso esingesigqibo seGosa leeNkcukacha okanye igosa eliliSekela leeNkcukacha, ngokwemeko, ukukhaba isicelo sofikelelo ngokwecandelo 22, 26 (1) okanye 29 (3). Isibheno sangaphakathi simele sifakwe ngokuthumela iFomu B kwidilesi, kwifeksi okanye kwidilesi yeimeyili yeGosa leeNkcukacha okanye igosa eliliSekela leeNkcukacha.
- Kwimeko apho enziwe onke amalinge enkqubo yokwenza isibheno sangaphakathi kwaye umenzi-sicelo okanye umntu wesithathu akonelisekanga sisiphumo, angaya enkundleni ukuze axole, kwiintsuku ezi-180 emva kokwaziswa ngesiphumo sesibheno sangaphakathi.

- Umenzi-sicelo angaya kwiNkundla kaMantyi okanye kwiNkundla ePhakamileyo.
- Kwimeko apho sivunyiweyo khona isicelo, ngaphandle kwesicelo sobuqu bomntu, umenzi-sicelo angenza intlawulo yomrhumo wofikelelo. 'Umrhumo wofikelelo' uthetha imirhumo ehlawulwa, umzekelo, xa umenzi-sicelo edinga iikopi zeerekhodi eziceliweyo kunye nexesha elithathiweyo ukukhangela ezo rekhodi kunye nokuzilungiselela. Uhlobo lwemirhumo kunye nesixa-mali esihlawulwayo sichaziwe kwimimiselo kwaye iqhotyoshelwe apha.
- Umntu ongatshatanga omvuzo wakhe wonyaka ungadlulanga kwi-R14 712,00 ngonyaaka kunye nabantu abatshatileyo, okanye umntu ohlala neqabane elingundofanaye abanomvuzo ongadlulanga kuma-R27 192,00 baxolelwe ekubeni bahlawule umrhumo wokufumana le rekhodi (ngokweSaziso sikaRhulumente R991 somhla we-14 kuOktobha 2005).
- Intlawulo yomrhumo yokufumana le rekhodi ayichaphazeli irekhodi yomenzi wesicelo ngokweSaziso sikaRhulumente R991 somhla we-14 kuOktobha 2005).
- Kwimeko ezithile, umenzi wesicelo unakho ngokunjalo ukucelwa ukuba ahlawule idipozithi.
- Umenzi wesicelo unakho ukufaka isibheni sangaphakathi ngokubhekiselele kwintlawulo yedipozithi kunye / okanye umrhumo wokufumana irekhodi. Ukuba ngaba umenzi wesicelo ufuna ukufaka isibheni sangaphakathi, iFomu C (njengoko ichaziwe kwiSaziso sikaRhulumente R223 somhla wesi-09 kuMatshi 2001) kufuneka izaliswa.
- Kwimeko apho inkqubo yokubhena yangaphakathi ifikelele esiphelweni abe umenzi wesicelo enganelisekanga sisiphumo, unakho ukuya kwinkundla yamatyala ukufumana umyalelo ofanelekileyo.
- Ilungelo lokufumana irekhodi liya kubanjwa de yonke imirhumo efanelekileyo ibe ihlawulwe.
- Ingcaciso inakho ukucelwa egameni lomnye umntu, kodwa kufuneka kuchazwe ukuba ingaba isicelo senziwa kuliphi na ibango.

Ukuba umenzi wesicelo akakwazi ukufunda okanye ukubhala, okanye akakwazi uyizalisa kuba elimele, isicelo sinokwenziwa ngomlomo. Igosa lengcaciso, okanye umntu ochongiweyo, kufuneka azalise ifomu egameni lomenzi wesicelo lowo ze amnike ikopi yefomu ezalisiweyo

**7. IINKONZO EZIFUMANEKAYO KULUNTU:
ICANDELO 14(1) (G)**

ISebe lezoLimo linabathengi bangaphakathi nabangaphandle..

Abathengi bangaphakathi bombutho baqulunqwe kuMphathiswa neSebe lezoLimo, abalawulu abaphezulu bombutho, amanye amacandelo namacandelwana akumbutho (umz. abaphandi, amagosa awongezelelweyo nabasebenzi boqeqesho). .

Abathengi bangaphandle baqulathe amafama (abavelisi bezolimo nemibutho yabo), uluntu lwasemaphandleni, abathengi beemveliso zolimo, amanye amasebe karhulumente wesizwe nowephondo, abaguquli, abathengisi nabnikezeli ngenkonzo, amaziko emali, amaqabane orhwebo amazwe aphesheya kolwandle, imibutho engekho phantsi kolawulo lukarhulumente, amaziko emfundo ephakamileyo, abanye abangabalimi, abacwangcisi bezixeko, abacebisi, abasebenzi basefama, abalimi basedolophini, oogqirha bezifo zezilwanyana abazimeleyo, imibutho yolondolozo lwendalo, ithrasti zophando, iibhodi ezisemthethweni, abafundi noomasipala. .

Umbuto unikezela ngeenkonzo ngesicelo somthengi okanye ngokubhengezwa kwemveliso okanye ukuthengiswa kweenkonzo ngethuba lokuhlangana nomthengisi, ngeemini zamafama, ngamathuba awandisiweyo, ngokunjalo nangokusetyenziswa kwetheknoloji yengcaciso (i-intanethi). Amaqhinga okuthengisa ngokubhekiselele kukusekwa nokunikezelwa kweenkonzo kufuneka asasazwe ngokwaneleyo ukwanelisa iimfuno zomthengi kodwa ngokunjalo kuxhonyekeke kubukho bemali nabasebenzi. Kukho ubudlelwane obahlukeneyo ngokubhekiselele kwiinkonzo eziphakathi komnikezeli ngenkonzo nomthengi, kunye nomthengi oxhomekeke kumthengisi ukuba afumane ingcebiso, umthengi uthanda uqhagamshelwano oluthe ngqo nokuthethathethana kunye nombutho.

8. AMALUNGISELELO AVUMELA UKUBANDAKANYWA KUQULUNQO LOMGAQO-NKQUBO NOKWENZIWA KWEMISEBENZI

ICANDELO 14(1)(g)

- ISebe lizimase imiboniso emininzi etyelelwe luludwe lwabathengi..
- Abantu abninzi aabhlukeneyo nekujoliswe kuba bayafumaneka kwimiboniso yamakhono, kuboniso lwempahla, kwimiboniso yamafama makwiintsuku zotyelelo kwiingawo zangaphandle kwiikhongresi zengingqi, njl.njl.
- ISebe lithabathe inxaxheba kurhwebo- kunye neeforam ezinxulumene nezolimo.
- ISebe liceba ukunxibelelana namafama ayevinjwe amathuba ngaphambili ngowama-2003 ngokuxhas ukusekwa kwemibutho ekinqanaba lesithili.

- Inkqubo elungiselelwe imibuzo kumphathiswa iyalandelwa, oku kutsho kunike ithuba lokuthethana nomntu ngamnye okanye amaqela kusekwe kumgaqo-nkqubo. Kwiimeko apho izikhokhelo zomgaqo-nkqubo zingekhoyo, umba lowo ufakwa kuqulunqo lomgaqo-nkqubo..

9. UNCEDO OLUFUMANEKAYO NGOKUBHEKISELELE KWIZENZO OKANYE KUKUSILELA UKWENZA INTO ICANDELO 14(1)(h)

UMthetho osebenzayo kwiSebe unakho ukunikezela ngovavanyo ngokutsha lwangaphakathi okanye inkqubo yokubhena. Ukuba ngaba le nkqubo ifikelele esiphelweni, okanye akukho sibonelelo sinokuphinda senzelwe inkqubo enjalo, inkundla inakho ukuchwechwelwa kulungiselelwa ukufunyanwa komyalelo. Nceda ubhekiselele kumqolo 6.3 ngasentla ochaza phandle isingxengxezo sangaphakathi kunye nenkqubo emayilandelwe yenkundla.

10. UFIKELELO NOKUFUMANEKA KWALE NCWADI ICANDELO 14 (3)

Inguqulelo yesiXhosa yale ncwadi iyafumaneka ukuze ijongwe kwidilesi yeeNkcukacha zeSekela. Le ncwadi iguqulelwe kulwimi lweSibhulu nakwelesiNgesi kwaye iyafumaneka nakwiwebhusayithi yesebe. Ikhonkco eliya kule webhusayithi limi ngolu hlobo:

<http://elsenburg-web.elsenburg.com:888/corporate/paia/paia.html>

ISIHLOMELO A

IFOM A

ISICELO SOKUFIKELELA KWIREKHODI ZEQUMRHU LOLUNTU

(iCandelo 18(1) lomthetho iPromotion of Access to information Act, 2000 (uMthetho No. 2 wama 2000))

[Ummiselo 2]

ILUNGISELELWE ISEBE KUPHELA

Inamba yokwaLathisa: _____

Isicelo senziwa ngu _____ (xela isikhundla/iwonga, igama nefani yegosa lolwazi/isekela-gosa lolwazi) ngomhla (xela umhla) e _____ (indawo).

Umrhumo wesicelo (ukuba ukho): R

Idiphozithi (ukuba ikho): R

Umrhumo wokufikelela kulwazi: R

UTYIKITYO LWEGOSA

LOLWAZI/ISEKELA-GOSA

LOLWAZI

A. Iinkcukacha zequmrhu loluntu

IGosa loLwazi/ISekela-gosa loLwazi:

B. Iinkcukacha zomntu owenza isicelo sokufikelela kwirekhodi

- (a) *Iinkcukacha zomntu ocela ukufikelela kwirekhodi mazibhalwe apha ngasezantsi.*
- (b) *Nika idilesi kunye/okanye inamba yefeksi kwiRiphabhliki ekufuneka kuthunyelwe kuyo ulwazi olo.*
- (c) *Ubungqina bewonga/besikhundla ekwenziwa phantsi kwalo isicelo, ukuba bukho, nabo mabunamatheliswe.*

Amagama apheleleyo nefani:

Inamba yesazisi:

Idilesi yePosi:

Inamba yeFeksi: Inamba yomnxeba:

idilesi yeE-mail :

Isikhundla/iwonga ekwenziwa phantsi kwalo isicelo, xa sisenziwa egamaeni lomnye umntu:

C. Iinkcukacha zomntu esifakwa egameni lakhe isicelo

Eli candelo kufuneka ligcwaliswe kuphela xa isicelo solwazi sisenziwa egameni lomnye umntu.

Amagama apheleleyo nefani:

Inamba yesazisi:

D. Iinkcukacha zerekhodi

- (a) *Nika iinkcukacha ezipheleleyo zerekhodi ekufunwa ukufikelelwa kuyo, kubandakanya inamba yokwalathisa ukuba uyayazi, ukuze ifumaneke loo rekhodi.*
- (b) *Ukuba isithuba sokubhala asaneli nceda uqhubeke kwelinye iphepha uze ulinamathelise kule fom. **Umenzi-sicelo kufuneka awatyikitye onke amaphepha ongezelelweyo.***

1. Inkcazelo yerekhodi okanye indawo/icandelo elifanelekileyo lerekhodi:

2. Inamba yokwalathisa , xa ikho:

3. Iinkcukacha ezizezinye zerekhodi:

E. Imirhumo

- (a) Isicelo sokufikelela kwirekhodi, esingesoserekhodi enolwazi ngawe, siya kuqwalaselwa kuphela emva kokuhlululwa **komrhumo wesicelo**.
- (b) Uya kwaziswa ngesixa-mali ekufuneka sihlawulwe njengomrhumo wesicelo.
- (c) Umrhumo ohlawulelwa ukufikelela kwirekhodi uxhomekeke kuhlobo ofuna ukuyifumana ngayo kwakunye nexesha elilingeneyo lokukhangela nokulungisa irekhodi leyo..
- (d) Xa ufanelekile ukuba uxolelwe ekuhlawuleni umrhumo lowo, nceda uxele isizathu soko.

Isizathu sokuxolelwa ekuhlawuleni imirhumo:

F. Uhlobo ekufuneka ibe kulo irekhodi

Xa uthintelwa sisiphako somzimba ukuba ufunde, ujonge okanye umamele irekhodi ngohlobo oyibonelelwe ngalo ku-1 ukuya ku-4 apha ngasezantsi, xela uhlobo lwesiphako eso uze uxele ukuba uyifuna ibe koluphi uhlobo irekhodi leyo.

Isiphako somzimba:	Uhlobo ekufuneka ibe kulo irekhodi:
--------------------	-------------------------------------

Phawula kwibhokisi efanelekileyo ngo "X".

AMANQAKU:

- (a) Ukufumaneka kwerekhodi ngohlobo obonise ukuba uyifuna ngalo kuxhomekeke kubukho bayo kolo hlobo.
- (b) Ukufunyanwa kwayo kuhlobo ecelwe ngalo kusenokwaliwa kwiimeko ezithile. Kwimeko enjalo uya kwaziswa ukuba unako na kuyinikwa ikolunye uhlobo irekhodi leyo.
- (c) Umrhumo ohlawulwayo ukuze ubenokufikelela kwirekhodi, ukuba ukho, uya kumiselwa kuphela ngokohlobo ocele ukuba ibekulo irekhodi.

1. Xa irekhodi iyinto ebhaliweyo okanye eshicilelweyo -

Ikopi yerekhodi*	Ukuhlolwa kwerekhodi
------------------	----------------------

2. Xa irekhodi inemifanekiso ebonwayo -

(oku kubandakanya iifoto, izilayidi, iividiyo, imifanekiso eyenziwa ngekhompyutha, iziketshi, njl.)

Ukujonga imifanekiso	Ikopi zemifanekiso*	Ukukhuphela imifanekiso*
----------------------	---------------------	--------------------------

3. Xa irekhodi inamagama arekhodiweyo okanye ulwazi olunokunikezelwa ngesandi -

Ukumamela isandi eso (ikhasethi emanyelwayo)	Ukukhutshelwa kwesandi * (uxwebhu olubhaliweyo okanye olushicilelweyo)
----------------------------------------------	------------------------------------------------------------------------

4. Ukuba irekhodi igcinwe kwikhompyutha okanye ngentambula/elektroniki okanye ifundwa ngomatshini -		
Ikopi yerekhodi eshicilelweyo*		Ikopi yolwazi oluphuma kwirekhodi eshicilelweyo* Ikopi efundeka ngekhompyutha* (istifi okanye idiski)

*Ukuba ucele ikopi okanye ukukhutshelwa kwerekhodi (ngasentla), ingaba uqwenela ukuba ikopi okanye ukhuphelo luposelwe kuwe? Umrhumo wePosi mawuhlawulwe.	EWE	HAYI
---------------------------------------------------------------------------------------------------------------------------------------------------------------------	-----	------

Qaphela, ukuba ngaba irekhodi ayifumaneki ngolwimi olukhethayo, ungayinikwa ngolwimi efumaneka ngalo.

Ingaba ukhetha ukuba irekhodi ibe ngoluphi na ulwimi?

G. Isaziso ngesigqibo esiphathelele kwisicelo sokufikelela kulwazi

Uya kwaziswa ngokubhalelwa ukuba ngaba isicelo sakho sivunyiwe /saliwe. Xa unqwenela ukwaziswa ngenye indlela, nceda ucacise indlela leyo uze ubonelele ngeenkukacha ezifanelekileyo ukuze kuphunyezwe isicelo sakho.

Ukhetha ukuba waziswe kanjani ngesigqibo esiphathelele kwisicelo sakho sokufikelela kwirekhodi?

Ityikitywe e _____ umhla _____
ku _____ wama-20 _____

UTYIKITYO LOMENZI-SICELO / LOMNTU
OWENZA ISICELO EGAMENI LOMNYE

IFOM B

ISAZISO SESIBHENO SANGAPHAKATHI

(ICandelo 75 lomthetho iPromotion of Access to Information Act, 2000 (UMthetho No. 2 wama-2000))

[Ummiselo 6]

**XELA INOMBOLO YAKHO
YOKWALATHISA:**

A. Iinkcukacha zequmrhu loluntu

IGosa loLwazi/iSekela-gosa loLwazi:

B. Iinkcukacha zowenza isicelo/zomnye umntu ofaka isibheni sangaphakathi

- (a) *Iinkcukacha zomntu ofaka isibheni sangaphakathi mazigcwaliswe apha ngasezantsi.*
- (b) *Ubungqina besikhundla/segonga esifakwa phantsi kwalo isibheni, ukuba bukhona mabunamatheliswe.*
- (c) *Xa ofaka isibheni ingomnye umntu ongenguye lowo wayefake isicelo ngaphambili, iinkcukacha zowenza isicelo mazixelwe apha ku-C ngasezantsi.*

Amagama apheleleyo nefani:

Inamba yesazisi:

Idilesi yePosi:

Inamba yeFeksi:

Inamba yomnxeba:

Idilesi yeE-mail:

Isikhundla/iwonga esifakwa phantsi kwalo isibheni sangaphakathi egameni lomnye umntu:

C. Iinkcukacha zowenza isicelo

Eli candelo kufuneka ligcwaliswe KUPHELA xa ingomnye umntu (ngaphandle kowenza isicelo) ofaka isibheni sangaphakathi.

Amagama apheleleyo nefani:

Inamba yesazisi:

D. Isizathu sokufakwa kwesibheni

Phawula ngo "X" esona sizathu sokufakwa kwesibheni sangaphakathi kwibhokisi efanelekileyo:

	Ukwaliwa kwesicelo sokufikelelela kulwazi.
	Isigqibo esiphathelele kwimirhumo emiselwe ngokwecandelo 22 loMthetho.
	Isigqibo esiphathelele ekwandisweni kwexesha ekufanele kuphendulwe ngalo isicelo ngokwecandelo 26(1) loMthetho.
	Isigqibo sokwaliwa kokunikwa kolwazi ngohlobo olucelwe ngalo ngumfaki-sicelo ngokwecandelo 29(3) loMthetho.
	Isigqibo sokunika imvume yokufikelela kulwazi.

E. Imeko esinokufakwa phantsi kwazo isibheni

*Ukuba isithuba esinikiweyo asanelangan nceda uqhubeke kwiphepha elilelinye uze ulinamathisele kule fom. **Kufuneka uwasayine onke amaphepha ongezelelweyo.***

Xela imeko osifaka phantsi kwayo isibheni sangaphakathi:

Xela naluphi na olunye ulwazi olufanelekileyo ukuze siqwalaselwe isibheni.

F. Isaziso sesigqibo ngesibheni

Uya kwaziswa ngokubhalelwa ngesigqibo sesibheni sakho sangaphakathi. Xa unqwenela ukwaziswa ngenye indlela, nceda ucacise uze ubonelele ngeenkcukacha ukuze kuphunyezwe isicelo sakho.

Xela indlela:

Inkcukacha zaloo ndlela:

UTYIKITYO LOFAKA ISIBHENO

ILUNGISELELWE UKUSETYENZISWA LISEBE :

IINKCUKACHA EZISESIKWENI ZESIBHENO SANGAPHA KATHI:

Isibheno sifunyenwe ngomhla _____ ngu

(xela iwonga, igama nefani yegosa lolwazi/isekela-gosa lolwazi).

Isibheno sikhathshwa zizizathu ezilungiselelwe igosa lolwazi/isekela-gosa lolwazi, kunye, apho kufanelekileyo, neenkukacha zakhe nawuphi na omnye umntu ochaphazelekayo zifakwe ligosa lolwazi/isekela-gosa lolwazi (ngomhla othile)

kwigunya-bantu elifanelekileyo.

ISIPHUMO SESIBHENO :

ISIGQIBO SEGOSA LOLWAZI/SESEKELA-GOSA LOLWAZI SINGQINWA

/SIMELWE ENDAWENI YASO SISIGQIBO ESITSHA

ISIGQIBO ESITSHA:

UMHLA

IGUNYA-BANTU

ELIFANELEKILEYO

UMHLA ESIFUNYENWE NGAWO LIGOSA LOLWAZI/LISEKELA-GOSA LOLWAZI
KWIGUNYA-BANTU ELIFANELEKILEYO:

IMIRHUMO

Isihlomelo A

IMIBA GABALALA: IRHAFU-NTENGO

Amaqumrhu karhulumente namashishini abhaliswe phantsi kweValue-Added Tax Act, 1991 (Umthetho Nomb. 89 ka-1991), njengoosomashishini bangafaka irhafu-ntengo kuyo yonke imirhumo ebekwe kwesi Sihlomelo.

ICANDELO I

IMIRHUMO EMALUNGA NESIKHOKELO

1. Umrhumo wekopi yesikhokelo njengoko uchaziwe kumqathango 2 (3) (b) no-3 (4) (c) yiR0,60 ngefotokopi nganye yephepha elingu-A4 okanye inxalenye yalo.

ICANDELO II

IMIRHUMO YAMAQUMRHU KARHULUMENTE

1. Umrhumo wekopi yemanyuwali njengoko uchaziwe kumqathango 5 (c) yiR0,60 ngefotokopi nganye yephepha elingu-A4 okanye inxalenye yakhe.
2. Imirhumo yokwenza uxwebhu kwakhona ekubhekiswe kulo kumqathango 7 (1) imi ngolu hlobo:

	R
(a) Ngefotokopi nganye yephepha elingu-A4 okanye inxalenye yalo	0,60
(b) Ngekopi nganye eprintiweyo yephepha elingu-A4 okanye inxalenye yalo elikwikhompyutha okanye elikwimo yokufundeka ngomatshini	0,40
(a) Ikopi ekwimo enokufundeka ngomatshini—	
(i) ekwidiski esistifi	5,00
(ii) ikhompakti diski	40,00
(d) (i) Ukukhutshelwa kwemifanekiso kwiphepha elingu-A4 okanye kwinxalenye yalo	22,00
(ii) Yekopi yemifanekiso	60,00
(e) i) Ukukhutshelwa kwento eteyitshiweyo kwiphepha elingu-A4 okanye kwinxalenye yalo	12,00

(ii)Ikopi yento eteyitshiweyo 17,00

3.Umrhumo wesicelo ohlawulwa ngumceli ngamnye, ngaphandle kwesicelo sabucala, ekubhekiswe kuso kumqathango 7 (2) yiR35,00.

4.Imirhumo yoxwebhu ehlawulwa ngumceli ngamnye ekubhekiswe kuyo kumqathango 7 (3) imi ngolu hlobo:

	R
(1) (a)Ngefotokopi nganye yephepha elingu-A4 okanye inxalenye yakhe	0,60
(b)Ngekopi nganye eprintiweyo yephepha elingu-A4 okanye inxalenye yalo elikwikhomyutha okanye elikwimo yokufundeka ngomatshini	0,40
(c)Ikopi ekwimo enokufundeka ngomatshini—	
(i) ekwidiski esistifi	5,00
(ii) ikhompakti diski	40,00
(d)(i) Ukukhutshelwa kwento eteyitshiweyo kwiphepha elingu-A4 okanye kwinxalenye yalo	22,00
(ii)Yekopi yemifanekiso	60,00
(e)(i)Ukukhutshelwa kwento eteyitshiweyo kwiphepha elingu-A4 okanye kwinxalenye yalo	12,00
(ii)Ikopi yento eteyitshiweyo	17,00
(f)Ukukhangela nokwenza irekhodi lenkcazo, R15,00 ngeyure nganye okanye inxalenye yayo, ngaphandle kweyure yokuqala ekufuneka ichithiwe ukukhangela okanye ukwenza irekhodi elo.	

(2)Ukulungiselela icandelo 22 (2) loMthetho, kusetyenziswa le

miqathango ilandelayo:

(a)Kufuneka kube kugqithiwe kwiiyure ezi-6 phambi kokuba kuthwe makuhlawulwe idiphozithi; yaye

(b)isinye kwisithathu semali yokufumana uxwebhu sihlawulwa njengediphozithi ngumfaki-sicelo.

(3)Imali yokuposa iyahlawulwa xa ikopi yerekhodi kufuneka iposelwe umfaki-sicelo.

ICANDELO III

IMIRHUMOYAMAQHUMRHU ABUCALA OKANYE AMASHISHINI

1. Umrhumo wekopi yemanyuwali njengoko uchaziwe kumqathango 9 (2) (c) yiR1,10 ngefotokopi nganye yephepha elingu-A4 okanye inxalenye yakhe.

2. Imirhumo yokwenza uxwebhu kwakhona ekubhekiswe kuyo kumqathango 11 (1) imi ngolu hlobo:

	R
(a)Ngefotokopi nganye yephepha elingu-A4 okanye inxalenye yalo	1,10
(b)Ngekopi nganye eprintiweyo yephepha elingu-A4 okanye inxalenye yalo elikwikhompuyutha okanye elikwimo yokufundeka ngomatshini	0,75
(c)Ikopi ekwimo enokufundeka ngomatshini—	
(i)ekwidiski esistifi	7,50
(ii)ikhompakti diski	70,00
(d)(i)Ukukhutshelwa kwemifanekiso kwiphepha elingu-A4 okanye kwinxalenye yalo	40,00
(ii)Yekopi yemifanekiso	60,00

(e)(i)Ukukhutshelwa kwento eteyitshiweyo kwiphepha elingu-A4 okanye kwinxalenye yalo	20,00
(ii)Ikopi yento eteyitshiweyo	30,00
3. Umrhumo wesicelo ohlawulwa ngumceli ngamnye, ngaphandle kwesicelo sabucala, ekubhekiswe kuso kumqathango 11 (2) yiR50,00.	
4. Imirhumo yoxwebhu ehlawulwa ngumceli ngamnye ekubhekiswe kuyo kumqathango 11 (3) imi ngolu hlobo:	
	R
(1)(a)Ngefotokopi nganye yephepha elingu-A4 okanye inxalenye yalo	1,10
(b)Ngekopi nganye eprintiweyo yephepha elingu-A4 okanye inxalenye yalo elikwikhompuyutha okanye elikwimo yokufundeka ngomatshini	0,75
(c)Ikopi ekwimo enokufundeka ngomatshini—	
(i)ekwidiski esistifi	7,50
(ii)ikhompakti diski	70,00
(d)(i)Ukukhutshelwa kwemifanekiso kwiphepha elingu-A4 okanye kwinxalenye yalo	40,00
(ii)Yekopi yemifanekiso	60,00
(e)(i)Ukukhutshelwa kwento eteyitshiweyo kwiphepha elingu-A4 okanye kwinxalenye yalo	20,00
(ii)Ikopi yento eteyitshiweyo	30,00
(f)Ukukhangela nokwenza irekhodi lenkcazo, R30,00 nganye okanye	

inxalenye yayo, ngaphandle kweyure yokuqala ekufuneka ichithiwe ukukhangela okanye ukwenza irekhodi elo.

(2)Ukulungiselela icandelo 54 (2) loMthetho, kusetyenziswa le miqathango ilandelayo:

(a)Kufuneka kube kugqithiwe kwiiyure ezi-6 phambi kokuba kuthwe makuhlawulwe idiphozithi; yaye

(b)isinye kwisithathu semali yokufumana uxwebhu sihlawulwa njengediphozithi ngumfaki-sicelo.

(3)Imali yokuposa iyahlawulwa xa ikopi yerekhodi kufuneka iposelwe umfaki-sicelo.